

## Objektiv Stylistic Variations

The fonts in the Objektiv family contain stylistic variations of key characters to allow you to introduce subtle changes in 'tone of voice', making Objektiv a versatile solution for many different design challenges.

**My manager will join us there.**

**Objektiv Mk1** references true geometry with minimalist treatments to characters such as the 'j' and 't'.

**My manager will join us there.**

**Objektiv Mk2** softens the geometric approach by introducing some traditional features.

**My manager will join us there.**

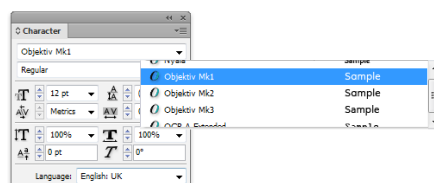
**Objektiv Mk3** replaces pure geometric forms with more humanist shapes like the double-storey 'a' and 'g' for increased legibility at body copy sizes.

## How to Access Stylistic Variations

There are two ways to access Objektiv's stylistic variations:

### 1 Choosing a specific Mk font family

In your application's font menu you will see Objektiv listed as three distinct font families, one for each Mk variation; simply select the one you would like to use.



### 2 Using the OpenType Stylistic Sets feature

Each Objektiv font supports the OpenType Stylistic Sets feature. If you are in an OpenType-compatible application, such as Adobe InDesign, navigate to the Stylistic Sets menu to find the three sets: Stylistic Set 1 refers to Mk1, Stylistic Set 2 to Mk2, and Stylistic Set 3 to Mk3.

